

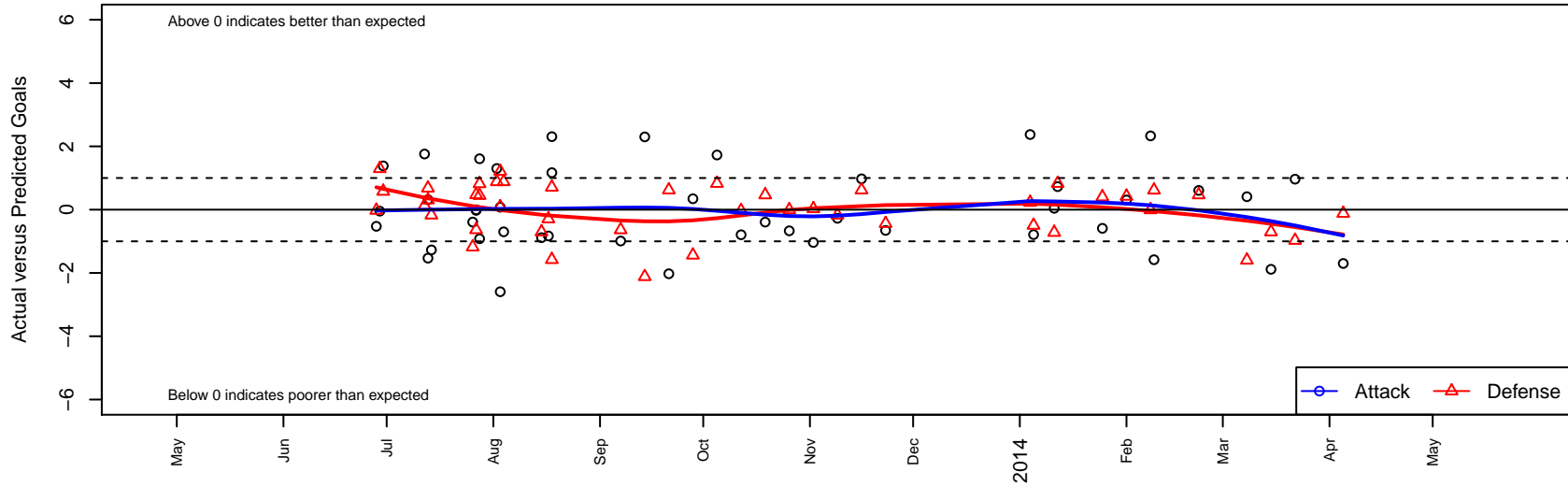
Seattle United NE Blue G99

Seattle United Regional
 Seattle, WA
 G99 total strength=1045
 attack=2.39 defense=2.29
 fall league = NPSL G14D1, NPSL Spr G14D1
 alt names used:
 Seattle United G99 NE Blue
 Seattle United NE Blue [G99]
 Seattle United NE G99 Blue
 SEATTLE UNITED SU NORTHEAST G99 BLU
 2013 Seattle United NE G99 Blue

Venues played:
 RVS Classic GU14
 Seattle Cup GU14
 Crossfire Select Cup GU14 Silver
 Dungeness Cup GU14
 Bigfoot Silver U14
 NPSL G14D1
 Founders Cup G99
 NPSL Spr G14D1



Seattle United NE Blue G99
 Dots are actual minus expected GF (blue circles) and GA (red triangles).
 Blue line is smoothed change in attack strength. Red is smoothed change in defense strength.



	date	home		away		venue	pred.home	pred.away
16580	2014-04-05	Tracyton Inferno G99	1	Seattle United NE Blue G99	0	NPSL Spr G14D1	0.88	1.700
16395	2014-03-22	Seattle United NE Blue G99	2	Kent United Green G99	2	NPSL Spr G14D1	1.04	1.029
16304	2014-03-15	Newport FC Fury G99	1	Seattle United NE Blue G99	1	NPSL Spr G14D1	0.30	2.885
16189	2014-03-08	Seattle United NE Blue G99	2	Seattle United S Blue G99	2	NPSL Spr G14D1	1.59	0.403
16005	2014-02-22	MIFC Fierce G99	0	Seattle United NE Blue G99	3	NPSL Spr G14D1	0.47	2.392
15927	2014-02-09	TC United G99	0	Seattle United NE Blue G99	0	Founders Cup G99	0.62	1.582
15911	2014-02-08	Crossfire Select Pfeifer G99	1	Seattle United NE Blue G99	3	Founders Cup G99	1.00	0.669
15884	2014-02-01	Seattle United NE Blue G99	2	Granite Falls YSC G99	0	Founders Cup G99	1.69	0.422
15856	2014-01-25	Seattle United NE Blue G99	1	Seattle United S Blue G99	0	Founders Cup G99	1.59	0.403
15761	2014-01-12	Seattle United NE Blue G99	2	Seattle United W Blue G99	0	Founders Cup G99	1.27	0.829
15756	2014-01-11	Seattle United NE Blue G99	6	MIFC Flames G99	1	Founders Cup G99	5.96	0.280
15746	2014-01-05	Kent United White G99	1	Seattle United NE Blue G99	1	Founders Cup G99	0.51	1.787
15737	2014-01-04	Snohomish United Red G99	0	Seattle United NE Blue G99	8	Founders Cup G99	0.23	5.626
15518	2013-11-23	Seattle United NE Blue G99	0	Crossfire Select Mallalieu G99	2	NPSL G14D1	0.66	1.562
15395	2013-11-16	Seattle United NE Blue G99	3	Seattle United Shoreline Blue G99	0	NPSL G14D1	2.03	0.621
15247	2013-11-09	Seattle United W Blue G99	1	Seattle United NE Blue G99	1	NPSL G14D1	0.83	1.272
15064	2013-11-02	Seattle United NE Blue G99	0	Kent United Green G99	1	NPSL G14D1	1.04	1.029
14866	2013-10-26	Seattle United NE Blue G99	0	Crossfire Select Pfeifer G99	1	NPSL G14D1	0.67	0.995
14681	2013-10-19	MIFC Fierce G99	0	Seattle United NE Blue G99	2	NPSL G14D1	0.47	2.392
14470	2013-10-12	FC Edmonds Fusion G99	1	Seattle United NE Blue G99	1	NPSL G14D1	0.97	1.793
14265	2013-10-05	Seattle United W Blue G99	0	Seattle United NE Blue G99	3	NPSL G14D1	0.83	1.272
14039	2013-09-28	Crossfire Select Mallalieu G99	3	Seattle United NE Blue G99	1	NPSL G14D1	1.56	0.655
13806	2013-09-21	Seattle United Shoreline Blue G99	0	Seattle United NE Blue G99	0	NPSL G14D1	0.62	2.025
13592	2013-09-14	Seattle United NE Blue G99	4	Tracyton Inferno G99	3	NPSL G14D1	1.70	0.882
13382	2013-09-07	Seattle United NE Blue G99	1	Lake Hills Infinity G99	1	NPSL G14D1	1.99	0.363
13115	2013-08-18	Seattle United NE Blue G99	4	Granite Falls YSC G99	2	Bigfoot Silver U14	1.69	0.422
13116	2013-08-18	Highline Premier Blue G99	0	Seattle United NE Blue G99	3	Bigfoot Silver U14	0.71	1.831
13028	2013-08-17	Highline Premier Blue G99	1	Seattle United NE Blue G99	1	Bigfoot Silver U14	0.71	1.831

	date	home		away		venue	pred.home	pred.away
12971	2013-08-15	Seattle United NE Blue G99	2	Newport FC Fury G99	1	Bigfoot Silver U14	2.88	0.296
12801	2013-08-04	Seattle United NE Blue G99	1	Tracyton Inferno G99	0	Dungeness Cup GU14	1.70	0.882
12745	2013-08-03	Seattle United NE Blue G99	4	Storm King G99	0	Dungeness Cup GU14	6.59	0.089
12748	2013-08-03	RSA Elite Black G99	0	Seattle United NE Blue G99	1	Dungeness Cup GU14	1.21	0.922
12682	2013-08-02	Seattle United NE Blue G99	3	Tracyton Inferno G99	0	Dungeness Cup GU14	1.70	0.882
12644	2013-07-28	Whatcom FC Rangers White G99	0	Seattle United NE Blue G99	1	Crossfire Select Cup GU14 Silver	0.45	1.919
12646	2013-07-28	Seattle United NE Blue G99	4	Fuerza FC Academy G99	0	Crossfire Select Cup GU14 Silver	2.39	0.818
12601	2013-07-27	Seattle United NE Blue G99	2	Snohomish United Black G99	0	Crossfire Select Cup GU14 Silver	2.00	0.472
12605	2013-07-27	Crossfire Select Barnes G99	1	Seattle United NE Blue G99	2	Crossfire Select Cup GU14 Silver	0.37	2.021
12575	2013-07-26	Seattle United NE Blue G99	2	Fuerza FC Academy G99	2	Crossfire Select Cup GU14 Silver	2.39	0.818
12415	2013-07-14	Seattle United W Blue G99	1	Seattle United NE Blue G99	0	Seattle Cup GU14	0.83	1.272
12385	2013-07-13	Seattle United NE Blue G99	0	NW United MacKay G99	0	Seattle Cup GU14	1.53	0.680
12391	2013-07-13	FC Spokane Grey 1 G99	0	Seattle United NE Blue G99	3	Seattle Cup GU14	0.31	2.686
12341	2013-07-12	Seattle United NE Blue G99	7	Seattle United NE Black G99	0	Seattle Cup GU14	5.24	0.128
12301	2013-06-30	Seattle United NE Blue G99	2	WPFC Fury Black G99	1	RVS Classic GU14	0.62	1.578
12288	2013-06-29	NWN Blue G99	0	Seattle United NE Blue G99	1	RVS Classic GU14	1.29	1.047
12267	2013-06-28	Seattle United NE Blue G99	0	RV Slammers Orange G99	1	RVS Classic GU14	0.53	0.979